

PRESENTATION OF TEACHING IN GYNECOLOGY AND OBSTETRICS FOR STUDENTS V. AND VI. YEAR OF MEDICAL SCHOOL BY GYNECOLOGICAL AND OBSTETRIC SIMULATORS

Dudič, R., Dudičová, V., Urdzík, P. (LF UPJŠ Košice)

Training for MediTec Students

September 2019. Košice, Slovakia


STUDY IN GYNECOLOGY AND OBSTETRICS

Theory non contact

- 14 theoretical lectures in Gynecology
- 14 theoretical lectures in Obstetrics

Practical - contact

- G1 – Gynecology 32 hours in 10 days block
- G2 – Obstetrics 42 hours in 10 days block
- Clerkship – 80 Hours - 2 weeks
- G3 40 hours theoretical lectures and 80 hours practical lectures



IS IT POSSIBLE TO SIMULATE
PRACTICAL SKILLS BY USING
SIMULATORS ?

GYNECOLOGIC SIMULATOR GAUMARD S503

- Life – size female lower torso
- Examination in mirrors
- Bimanual palpation
- Uterine and cervical lesions



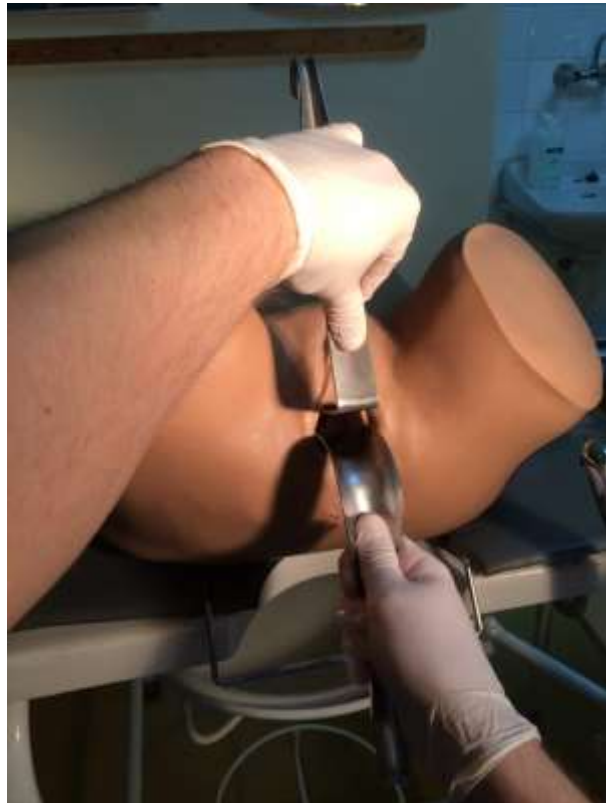
GYNECOLOGIC SIMULATOR GAUMARD S503

- Simulator handling



GYNECOLOGIC SIMULATOR GAUMARD S503

- Mirrors examination



GYNECOLOGIC SIMULATOR GAUMARD S503

- Bimanual and rectovaginal examination



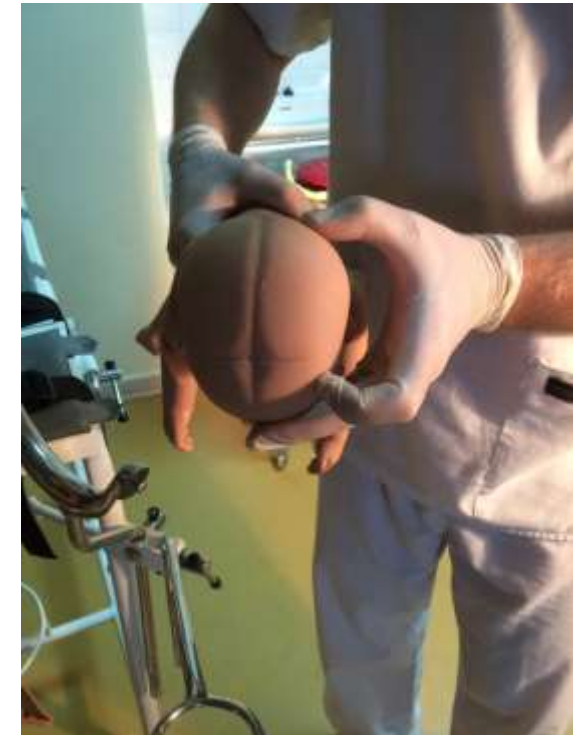
OBSTETRIC SIMULATOR PROMPT 80005

- Anatomically accurate walled basin (CT)
- Silicon pelvic floor muscles,
- Palpable fontanelle contours and seams
- Detachable placenta with umbilical cord
- Continuous monitoring of the child



OBSTETRIC SIMULATOR PROMPT 80005

- Childbirth heading
- Breech deliveries
- Identification of the fountains and the sagittal suture



OBSTETRIC SIMULATOR PROMPT 80005

- Simulation of II. a III. delivery stage



OBSTETRIC SIMULATOR

3B SIMONE

- Highly realistic (characteristic sounds, resistance and speed)
- The proper use of instruments in assisted vaginal delivery
- Positioning of the fetal head relative to the mother's pelvis
- Coping with obstetric complications
- Assessment during labor
- Correct and rapid situational response



OBSTETRIC SIMULATOR

3B SIM_{ONE}

- Model of a female abdomen with a vulva and the ischial spine
- Fetal head – sagittal suture, fontanelle
- The exact position and rotation of the head during II. stage of labor
- History
- CTG
- Partogram
- Medication
- Amniotomy
- Practicing handling forceps and VE



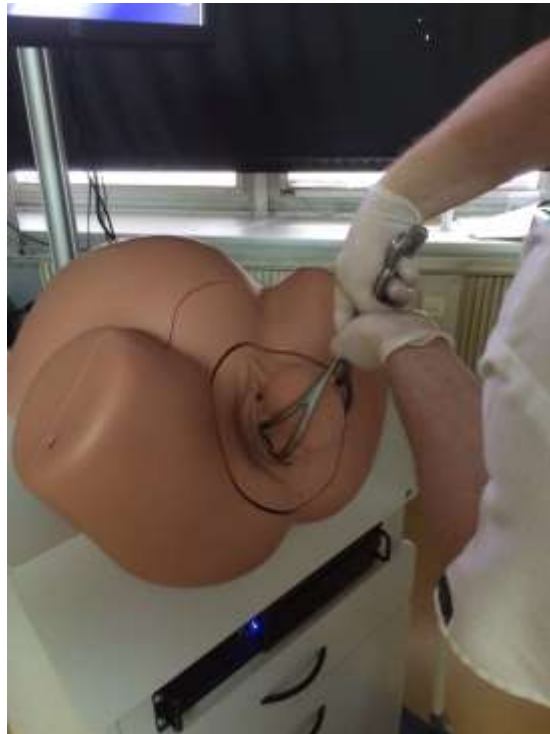
OBSTETRIC SIMULATOR 3B SIMONE



OBSTETRIC SIMULATOR

3B SIMONE

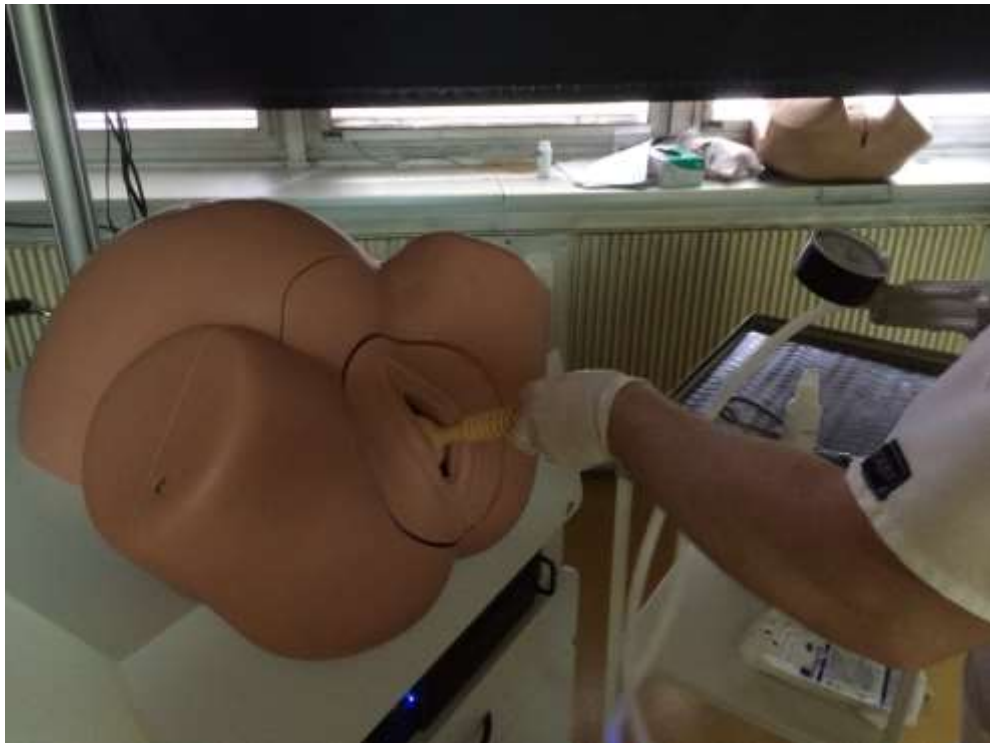
- Partus per forcipem



OBSTETRIC SIMULATOR

3B SIMONE

- Partus per VE



LIVE SURGERY

- Live transmission from the central operating tract



BREAST EXAMINATION TRAINER ADVANCED





SIMBIONIX U/S MENTOR

Ultrasound Examination

The Symbionix U/S Mentor training simulator combines 3D Virtual cases and Clinical Focused Scenarios featuring reconstructed ultrasound scans. Learners benefit from the didactic strength and superior assessment, as well as absolute realism.

SIMULATOR FEATURES AND BENEFITS

- Training materials include external visualizations, anatomic labels, tutorials, immediate performance feedback and more.
- Skill tasks and step-by-step procedural tasks provide a self-learning opportunity and save valuable faculty time.
- True-to-life anatomies, physiology and pathologies.
- Realistic probe switch for immediate alternated approach: TTE/TEE, TAS/TVS.
- Training to the full extent of the actual procedure.
- Customizable diagnostic difficulty level based on trainee's experience.
- Image controls and diagnostic tools freely available in all patient cases.
- Power, color and spectral Doppler modes.
- Procedure-restricted mode for unaided performance and testing.
- Documentation and clinical findings report enhance diagnostic sensibilities.

U/S Mentor Modules

Modules and clinical cases are continuously developed in collaboration with medical experts to serve the growing demand for ultrasound training in various clinical specialties.



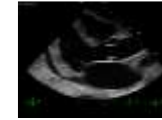
SONOGRAPHY BASIC SKILLS

Develops psychomotor skills and basic sonography capabilities. Focuses on hand-eye coordination and ultrasound image control (knobology).



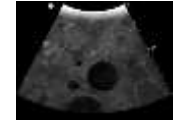
eFAST and RUSH

Adult and pediatric trauma scenarios with findings such as free fluid in the abdomen or thorax, pericardial effusion, pleural effusion and pneumothorax.



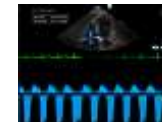
BEDSIDE ECHOCARDIOGRAPHY

Practice point of care standard views acquisition, abnormalities diagnosis, hemodynamic assessment, documentation and clinical findings reporting.



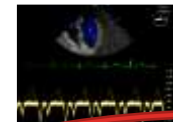
ABDOMINAL

Assessment of adult and pediatric virtual patients with pathologies such as AAA, liver mass, renal / gallbladder abnormalities and more.



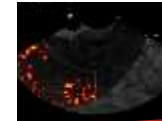
ADVANCED ECHO

Comprehensive cardiac evaluation of adult and pediatric cases. Includes advanced diagnostic tools and measurements for complete, in-depth, assessment.



TEE

Realistic training environment for TEE probe maneuvering to demonstrate standard views, evaluate anatomy and physiology, and diagnose diverse findings.



BASIC GYN

Covers standard views acquisition, measurements, documentation and clinical findings diagnosis of normal, pathological and emergency cases.



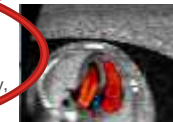
OBSTETRICS 2nd TRIMESTER

Structured assessment of varying fetuses with normal and abnormal findings including measurements, and documentation.



OBSTETRICS 1st TRIMESTER

TAS/ TVS scanning for structured assessment to confirm and evaluate: viability, GA, multiple fetuses pregnancy, chromosomal anomaly and fetal gross anatomy.



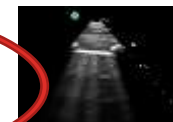
FETAL ECHO

Learn and practice accurate prenatal diagnosis of normal or abnormal findings. Virtual patient cases feature diverse fetus positions and varied CHD conditions.



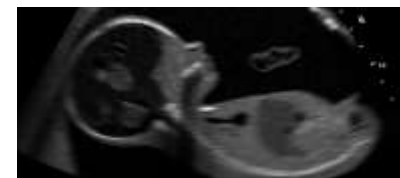
FETAL NEUROSONOGRAPHY

Focused Clinical Scenarios
Practice advanced diagnosis based on real ultrasound imaging of normal and abnormal fetal brain or spinal scans at various gestational ages.

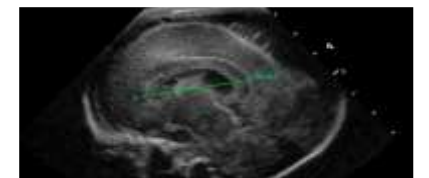


LUNG ULTRASOUND

Practice lung and pleural scanning with diverse lung artifacts and scanning protocols. Pneumonia, Pneumothorax, and Pulmonary edema pathologies.



VR simulation offers self-directed learning followed by meaningful performance assessment.



Focused Clinical Scenarios feature real ultrasound scans for enhanced diagnostic training.

Request a demo or more information at healthcare@3dsystems.com

MentorLearn Simulator Curricula Management System

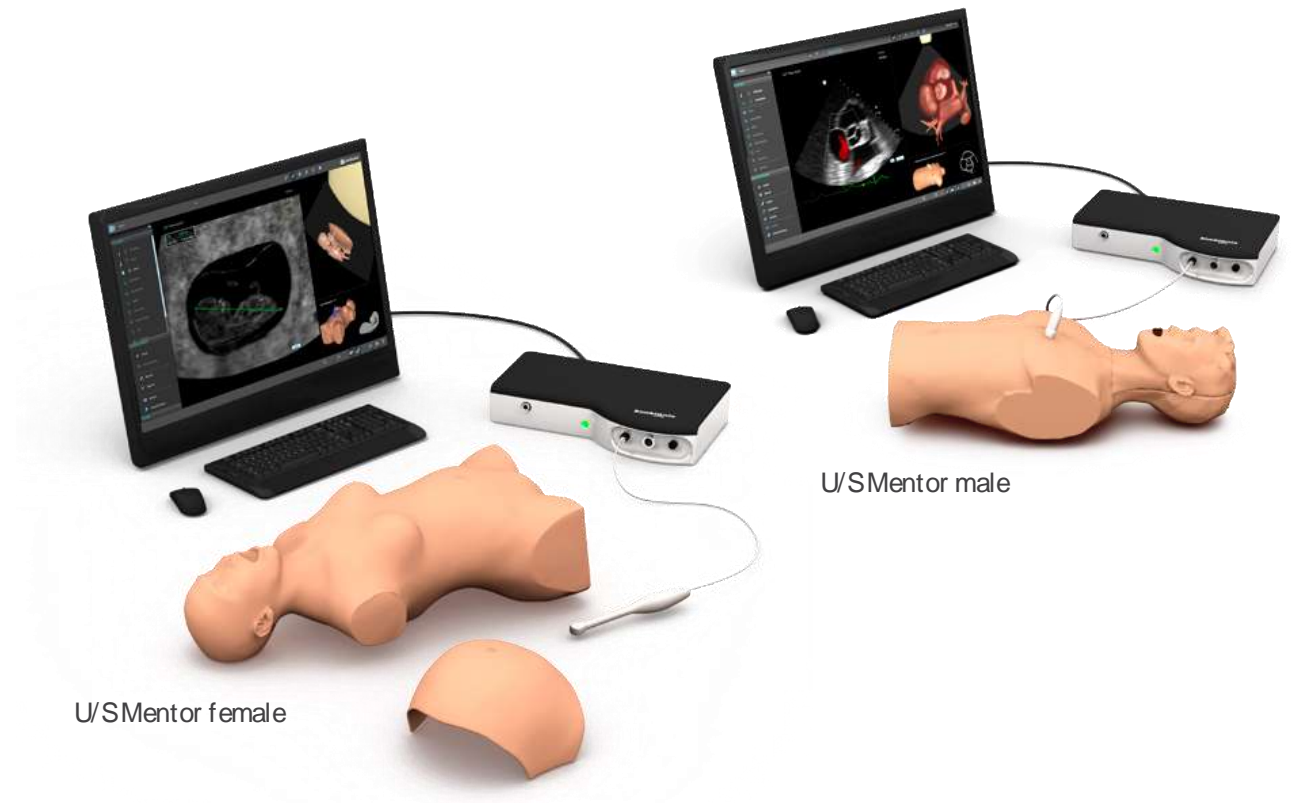
3D SYSTEMS' MULTIDISCIPLINARY SIMULATORS EFFORTLESSLY INTEGRATE INTO YOUR PROGRAM CURRICULUM



- Customizable curriculum incorporating training and didactics.
- Easy and efficient administration of simulator users.
- Online learning courses and video-based content.
- Proficiency based hands-on training.
- Performance reports with learning curve graphs.
- Recorded videos of the simulation sessions for debriefing.

Simulation Platform

- Portable platform for quick and easy setup.
- An elegant modular platform supports both desktop and standalone configurations.
- True-to-life, palpable mannequins can be alternated for continuous training.
- Optional cart configuration with adjustable elements for a more ergonomic working position.



WORKING WITH SIMBIONIX U/S MENTOR



WORKING WITH SIMBIONIX U/S MENTOR





Thank you for attention.